

PUBLISHABLE SUMMARY

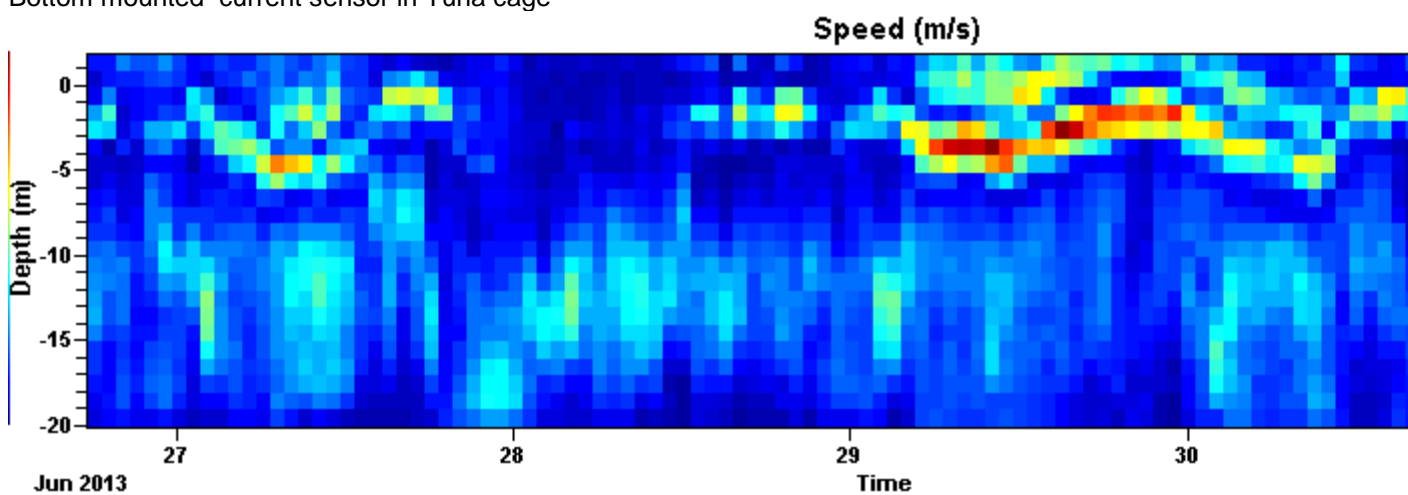


Blue-fin tuna broodstock swimming in the cage at MFF site in 2013.

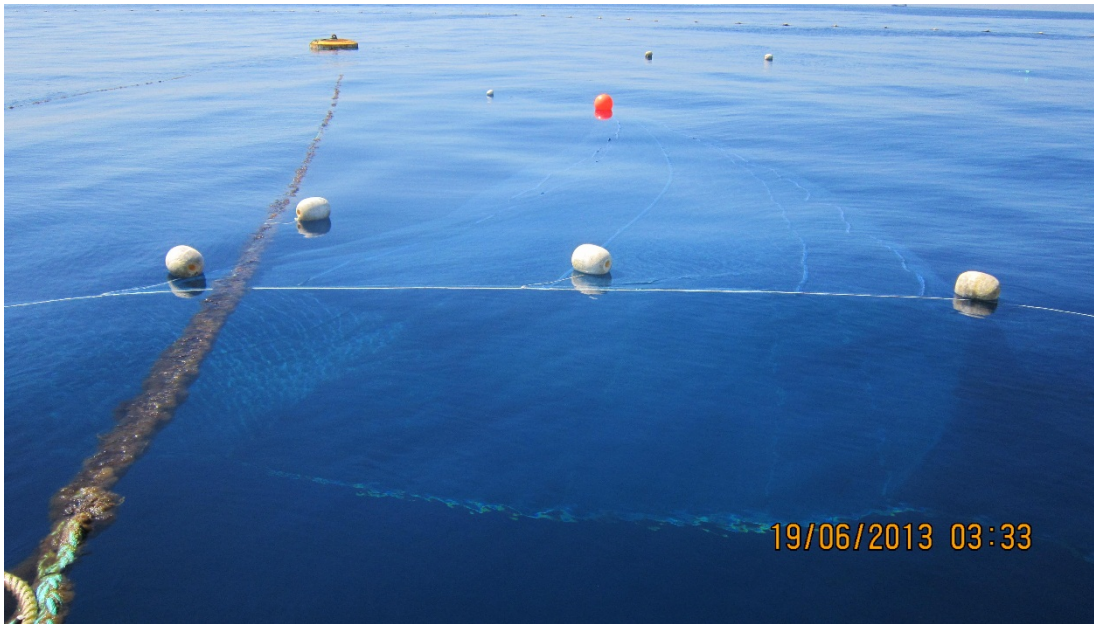


Tuna broodstock cage at MFF site in Malta in 2014

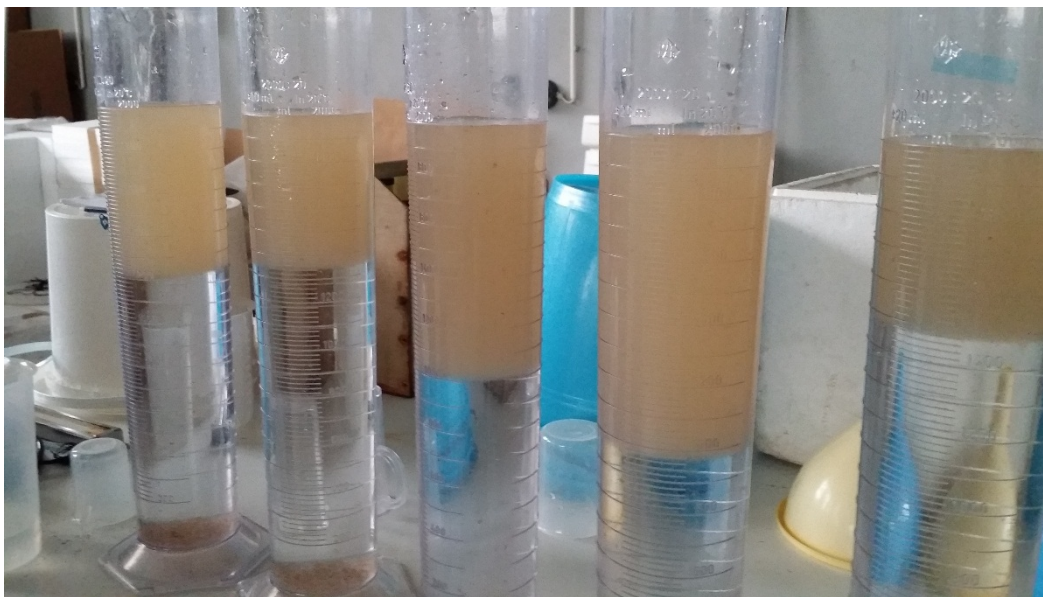
Bottom mounted current sensor in Tuna cage



Averaged data of current speed measured in 1m cells from the bottom of the cage looking upwards towards the surface. Maximum depth was approximately 20 m.



The gaping opening of the trawl net egg collector approximately 6m wide and 4m deep. The prevailing current direction is shown by the yellow arrow.



BFT eggs settle at surface within measuring cylinders for volume measurement



Cardboard boxes ready for transportation to airport for overseas shipment.

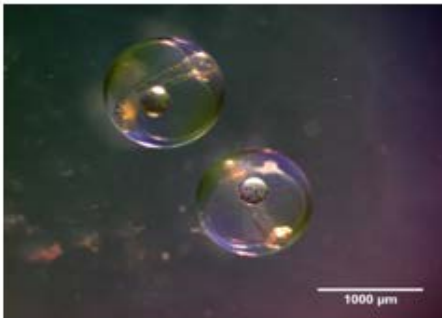


Fig. 1: *T. thynnus* eggs; Mean Egg \varnothing : 1,05mm

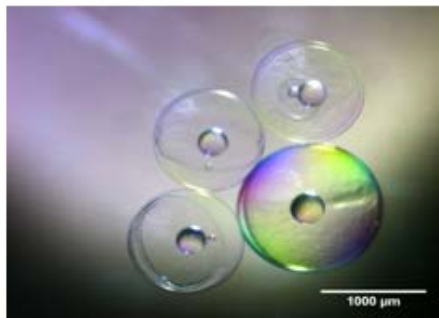


Fig. 2: Small eggs; Mean Egg \varnothing : 0,79mm

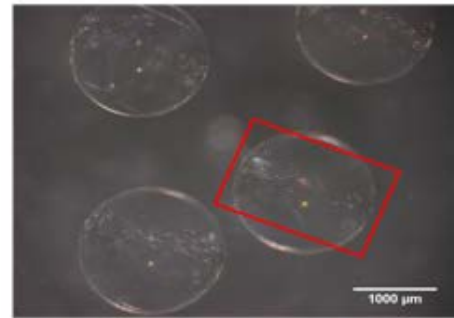


Fig. 3: Ornamented eggs; Mean Egg \varnothing : 1,71mm

- 100 tuna fingerlings (20 gr) to Copepod tank
4 months later: 1,9 Kg using moist diet



Results from Futuna Blue in 2013

PARTNERS (email contact details)

1. HEINRICH-HEINE-UNIVERSITAET DUESSELDORF, GERMANY (bridges@hhu.de)
2. MINISTRY FOR RESOURCES AND RURAL AFFAIRS, MALTA (robert.j.vassallo@gov.mt)
3. ISRAEL OCEANOGRAPHIC AND LIMNOLOGICAL RESEARCH ISRAEL (bmkoven@gmail.com)
4. MFF LTD MALTA (sellul@ebcon.com.mt)
5. FUTUNA BLUE ESPAÑA SL SPAIN (patricio.urrutia@futunablue.com)
6. ARDAG COOPERATIVE AGRICULTURAL SOCIETY LTD, ISRAEL (koby@ardag.co.il)
8. SKRETTEING AQUACULTURE RESEARCH CENTRE AS, NORWAY (Karl.Sveinsvoll@skretting.com)